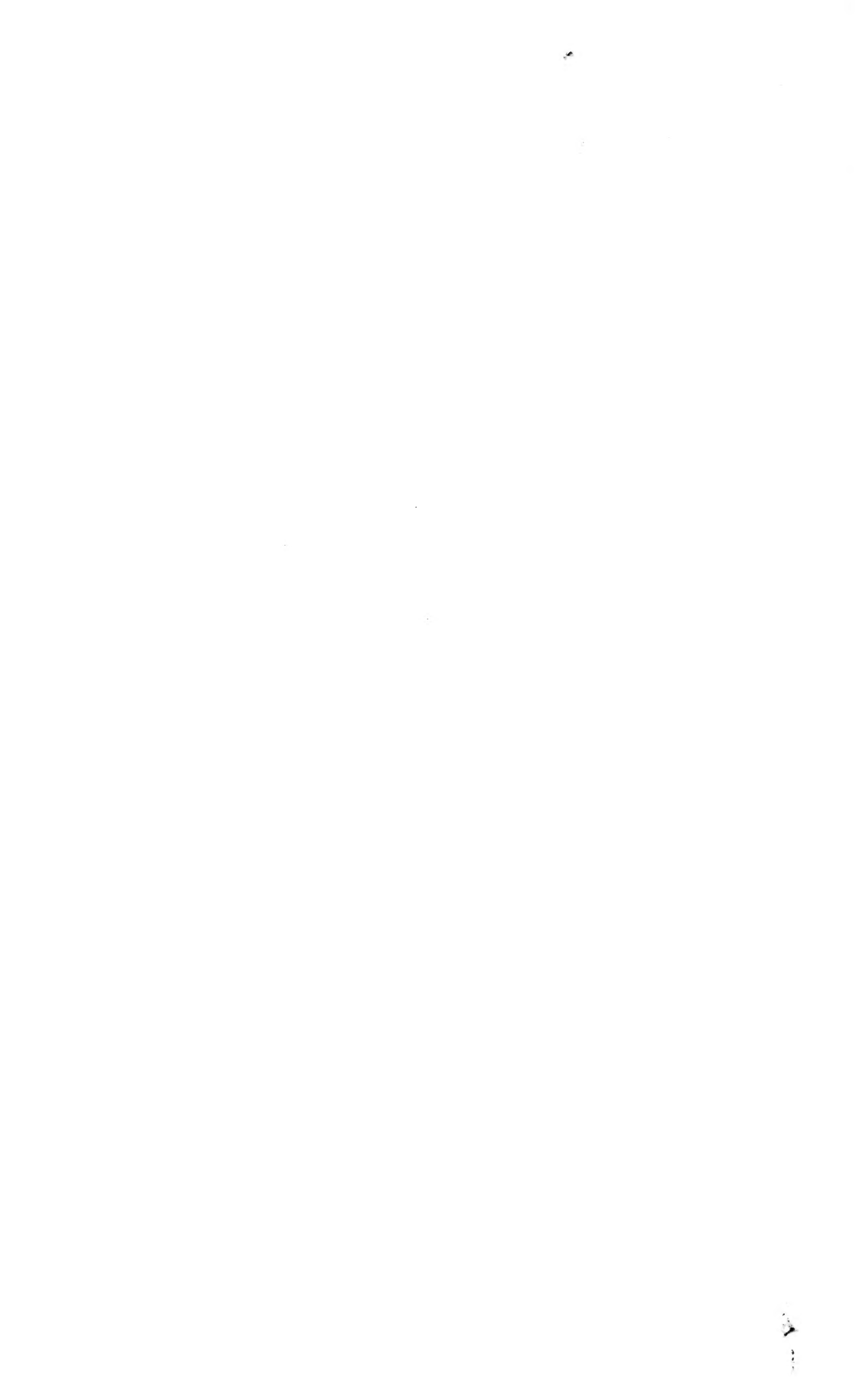


Historic, archived document

Do not assume content reflects current scientific knowledge, policies, or practices.



SAVE COAL MAKE BIGGER PROFITS

TO GET the largest profit from green-houses use plenty of Tulips, Hyacinths and Narcissus which require a minimum of heat. Many florists successfully plant bulbs in boxes or flats and leave them outdoors, covering with straw or other litter during cold winter weather and then bring them into moderate temperature when they will quickly force into bloom.

The increasing popularity of bulbous cut flowers and flowering plants and the limitless possibilities of sales for outdoor planting, offer unusual opportunities for profitable business. Compared with other florist' stocks, the expense and labor are small, the profit large and practically certain.

Probably due to both of the above reasons, we are receiving unusually early and unusually large orders, all of which leads us to urge our customers, both old and new, to plan wisely how large quantities you can use and to send us your orders early to secure your first choice of varieties and to avoid delay in shipment.

JAMES VICK'S SONS

ROCHESTER, N. Y.

D. N. Shoemaker. "THE FLOWER CITY"

OCT 16 1922

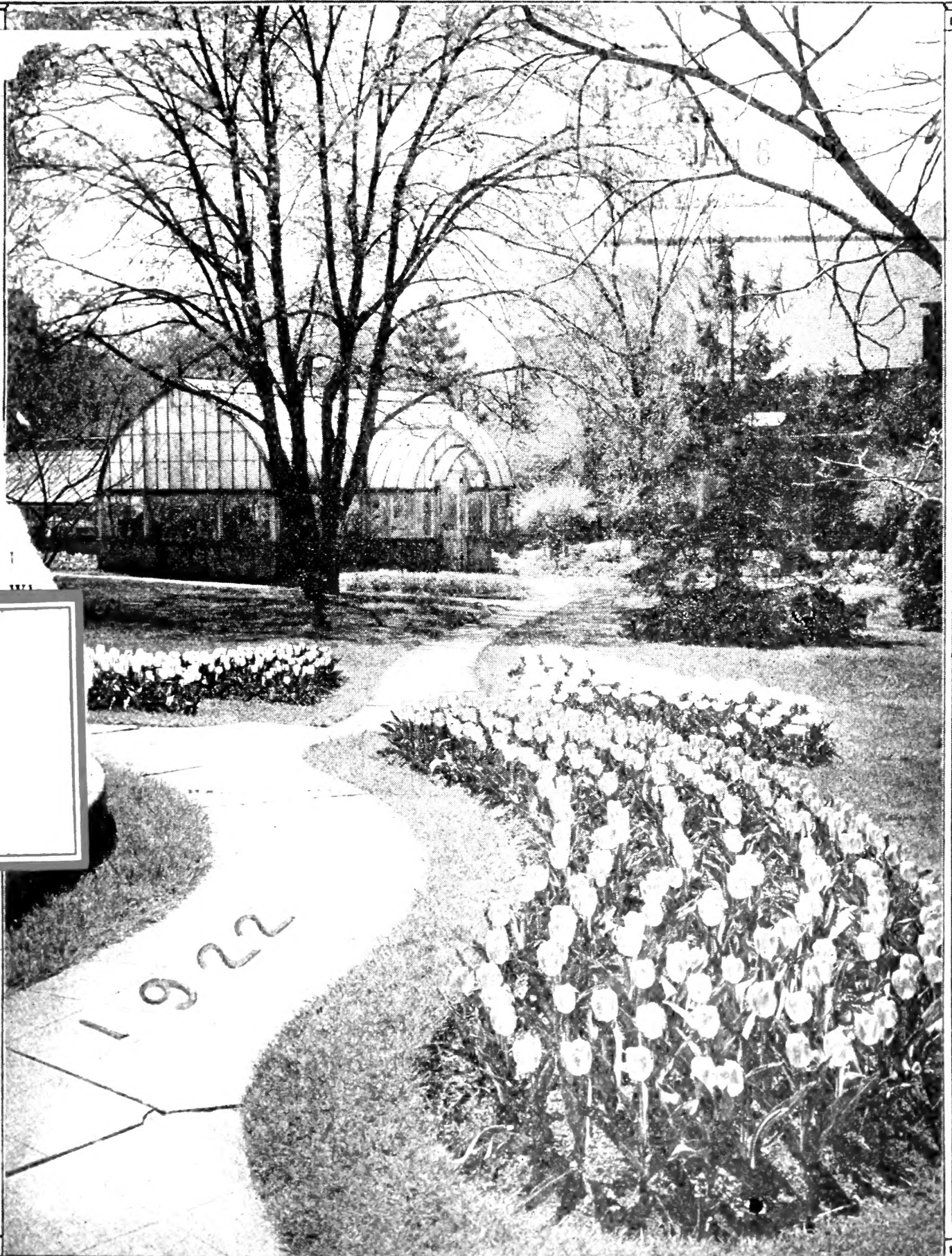
THE COAL

THE BRIGHT LINE

The first part of the book is devoted to a description of the coal fields of the United States. It gives a general view of the coal resources of the country, and of the methods of mining and transportation. The second part is devoted to a description of the coal fields of the world. It gives a general view of the coal resources of the world, and of the methods of mining and transportation. The third part is devoted to a description of the coal fields of the future. It gives a general view of the coal resources of the future, and of the methods of mining and transportation.

6

VICK'S WHOLESALE BULB CATALOG



JAMES VICK'S SONS
ROCHESTER, N. Y.
"The Flower City"

Early or Winter-Flowering Spencer Sweet Peas

The growing of Early Winter-Flowering Sweet Peas has now become as much a part of the regular growing plan of all florists as is the carnation bed. Although there are a few recognized varieties that florists have used for a number of years, new sorts of proven merit are being introduced from year to year and the following list contains several of the best of these new introductions as well as a number of the best of the older varieties. Even where you do not have space to grow Sweet Peas in the greenhouse, if you will plant these extra early flowering varieties in a warm, sunny location out-of-doors during January or February you will get your flowers unusually early in the spring.

Sweet Peas sown in greenhouses need more care in planting than those sown in the open ground in order to prevent damping off. Sow very thinly and thin out to about three inches in the row. It is best to sow the tender varieties, such as whites and light pinks, in sand and transplant. Sow ninety to one hundred days ahead of the time that you want the bloom. For Christmas blooming the seeds should be sown about the middle or latter part of September.

Early-Flowering Sweet Peas bloom in one hundred to one hundred and ten days in the open ground under normal conditions. Time required to bring into bloom in the greenhouse will vary more or less according to the amount of sun light and heat.

Our customers tell us that Winter Flowering Sweet Peas are one of their best paying crops and a row through the center of a wide ground bench is a good investment.

Prices of the following varieties.

Per oz., 85 cts.; per 1-4 lb., \$3.00; per lb., \$10.00.

Asta Ohn. Fine lavender. Same form as late-flowering Asta Ohn.

Blanche Ferry. Pink and white. Standards bright crimson. Wings white, tinted pink. Very Large.

Cream. A primrose Spencer of fine shape and size, similar to late-flowering Dobbie's Cream.

Heather Bell. Rich lavender mauve. Flowers are very large, borne in threes and fours on long stems.

Liberty. Brilliant, crimson-scarlet, good form and size.

Lavender Pink. Large flowers borne in threes and fours on large stems.

Melody. Rose pink on white ground.

Morning Star. Orange scarlet. Flame color standard with orange pink wings.

Rose Queen. Unusually long stem, large flowered rose pink.

Snow Flake. Magnificent early white, a superb form, three or four flowers on long stems.

Song Bird. Pale rose pink with white ground. Flowers profusely. Long stems.

Venus. Standard white, slightly flesh pink. Very fragrant.

Prices of the following varieties.

Per oz., 75 cts.; per 1-4 lb., \$2.50; per lb., \$8.00.

Mrs. A. A. Skatch. Clear pink. One of the best of the pink Spencers.

Spring Maid. Crimson pink. A very beautifully shaded flower. Strong grower, long stem, prolific.

Warbler. Extra large, beautifully formed, rich mauve purple.

Yarrowa. Best Spencer form. Bright rose pink with light wings.

GRANDIFLORA TYPE

Prices all Varieties :

Per oz., 15 cents; 1-4 lb., 40 cents.

Christmas White (Mont Blanc).

Earliest of All. Pink and white.

Mrs. C. H. Totty. Lavender.

Mrs. F. J. Dolansky. Blue and pink.

VICK'S

Wholesale Bulb, Seed and Plant Catalogue

For Fall of Nineteen Hundred Twenty-Two

The Prices in This Book are for Florists and Dealers Only

The best possible proof of superior quality of our stock and satisfactory service is the fact that our fall bulb sales are increasing so rapidly that our importations this year will greatly exceed those of last year, which broke all previous high records, coming, as usual, from concerns in whose reliability, by long experience, we have the great confidence.

We call attention to the unusually low quotations on new varieties. We list only the best and most profitable of the older kinds and the most popular of the reasonably priced new varieties. Our quotations are based on the lowest reasonable margin of profit, but remember this: We attach more importance to high quality than we do to low price. The satisfactory quality will be remembered when the price has been forgotten. Better get your stock on hand a few days early than a day late.

Bulbs are an Economical Crop. In view of these lower prices, it will pay florists to secure a liberal quantity of bulbs this fall. They can be grown to perfection with very little heat. If buried outside in flats or pots this fall, covered with leaves, straw or boards, they can be dug out as needed during the winter and no matter how hard they freeze if slowly brought into heat, will bloom in a short time. Bulbs are going to be more in demand than ever. Be prepared to get your share of the business and send in your order at once.

Our Terms are liberal. To parties of approved credit we allow 60 days time, or 2 per cent. discount if paid in 10 days from date of invoice, or 3 per cent. if cash is sent with order. Orders from new or unknown customers should be accompanied by cash; or, if credit is desired by new customers, satisfactory references, preferably banks and business concerns who have extended credit, will be required. No goods will be sent C. O. D. unless a partial remittance is made as a guarantee that goods will be accepted. *These prices are subject to change without notice.*

Our Facilities are unsurpassed. With freight and express conditions normal we can handle orders rapidly. Nine railroads enter Rochester, whose numerous fast freight and express trains enable customers to secure their shipments promptly.

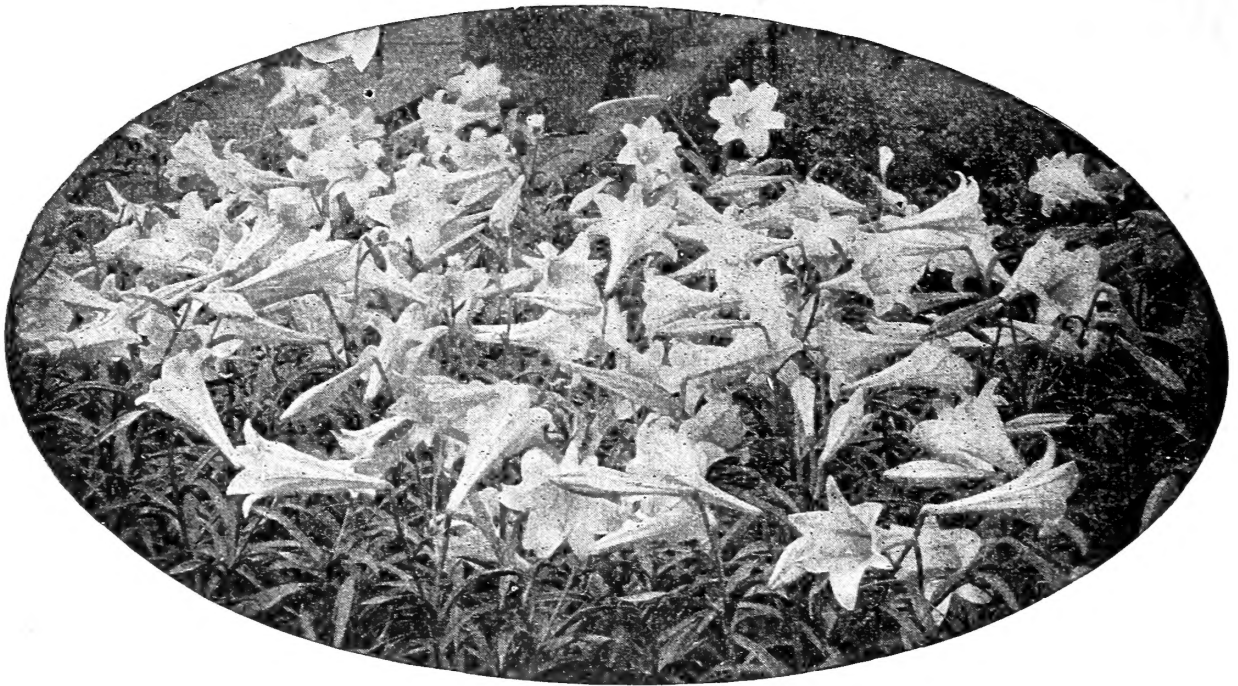
At prices here quoted we deliver all goods to the freight or express companies in Rochester, with no charges for boxes, packing or carting. With our excellent equipment for shipping we can be depended upon to send out bulbs in apparent good condition; after that our responsibility ceases. While we exercise great care to have all Seeds, Plants and Bulbs true and reliable, we give no warranty, express or implied, as to description, quality, productiveness or any other matter, and we will not be responsible in any way for the crop. If the customer does not accept these terms, it is not a sale, and the goods are at once to be returned, and the money paid for same will be refunded. Subject only to the above conditions, and by reason thereof, we make the moderate prices at which we sell our goods.

Special Notice. Customers should give on every order, full name, postoffice, freight or express station, county and State; and also advise whether goods are wanted by express or freight. In the absence of such instructions we will ship according to our best judgment, but will not be responsible for the consequences. WE USUALLY SHIP BY EXPRESS, believing that course to be safer and more satisfactory. But sometimes, in the absence of instructions, we ship by freight, especially in cases of heavy shipments, to points easily reached. We have no fixed rule, however, and advise that customers give their preference.

A Final Request. Customers should advise whether they desire the varieties shipped when ready, or the entire order held until it can be shipped together. If not advised, we will ship when each kind of bulb is ready. The early Bulbs—Paper White Narcissus, Freesias Candidum, Harrisii and Calla Lilies—can be furnished at once: nearly all of these have already arrived. Hyacinths, Tulips, Crocus, etc., in September; Lilies of our own growing can be furnished in October while most imported hardy lilies, do not, as a rule, arrive until late in October or November.

The prices in this catalogue are based on duties in effect at the time this catalogue goes to press. If the present tariff is changed before our bulbs are received, our prices will, of course, have to be revised accordingly.

Vick's Lilies For Forcing



4

LILIUM HARRISII

Invaluable for florists. Can be forced into bloom by Christmas. Our stock comes direct from one of the best growers in Bermuda, to whom we pay special prices to secure extra good bulbs, well grown, thoroughly ripened, carefully packed. We believe this stock will give perfect satisfaction. For early flowers Harrisii will be in great demand.

7 to 9 inch bulbs. Per dozen, \$4.00; per 100, \$28.00

LILIUM FORMOSUM

This is a splendid pure white, free flowering Lily of the Longiflorum type, imported by us from the Island of Formosa. The Formosum can be forced into bloom earlier than any other Lily of its type except Harrisii, for which it is a good substitute.

7 to 9-inch, per doz., \$3.50; per 100, \$25.00.

LILIUM LONGIFLORUM MULTIFLORUM, Japanese Easter Lily

This magnificent lily is a great favorite both for forcing and outdoor planting. It resembles L. Harrisii in color and shape. While it cannot be brought into flower quite as early, it is a great favorite to follow Harrisii. Flowers are pure white, trumpet shaped and exquisitely fragrant. We offer only the best imported stock.

Original case contains 300 7 to 9-inch bulbs. Per dozen, \$3.00; per 100, \$22.00.

LILIUM GIGANTEUM -- Blue Stem

The best of the Japan Lilies. A little later than the other varieties but hardier and freer blooming. Bulbs can be put in cold storage and taken out as needed during the Winter and Spring, or may be planted at once the same as Formosum.

Size		Per doz.	Per 100
7-9-inch Extra fine, very popular. Original case contains about 300 bulbs		2 75	20 00
6-8-inch 2 to 3 flowers to the stalk, original case about 400 bulbs.		3 25	25 00

LILIUM CANDIDUM

This variety is sometimes called the Annunciation Lily, or Madonna Lily. Good for forcing, also used for outdoor planting. Its snowy white flowers are borne aloft by long, slender stems. Unsurpassed in stateliness and beauty for outdoor culture.

Large Size Bulbs, Per Doz. \$1.75; per 100, \$12.00; Extra Size Bulbs, per doz. \$2.25; per 100, \$15.00.
Mammoth Size Bulbs, Per Doz. \$3.00.

The prices on this page are based on the best information available at the time this catalogue goes to press, but are subject to revision up or down according to the market at time of shipment.



CALLA LILIES
DRY BULBS

Owing to the shortage of the other Lily stocks there is bound to be a tremendous demand for Calla Lily bulbs.

Superior for forcing. Our bulbs are thoroughly ripened and come direct from one of the largest growers in the world.

We have a very select stock of bulbs, 1½ to 1¾ inches which we offer at \$2.50 per dozen or \$18.00 per hundred.

Large Bulbs 1¾ to 2-in., doz., \$2.75; 100 \$20.

FREESIA PURITY

This variety has taken the place of Freesia Refracta Alba and is far superior to it. These bulbs can easily be brought into bloom for Christmas by early planting and always find ready sale. The stock that we handle is a superior, well-selected strain of fully matured bulbs that are sure to bloom under normal conditions. First size, 1-2 to 5-8 per dozen, 50 cents; per 100, \$1.75; per 1,000 \$15.00. Extra choice, 5-8 to 3-4 per dozen, 60 cents; per 100, \$2.25; per 1000, \$20.00.

NARCISSUS, Paper White Grandiflorus

Superior in every way to the ordinary Paper White. Very popular for forcing. Can be brought into flower in about 30 to 40 days. Will do well in ordinary house temperature and with no special care. For growing in dishes in pebbles and water they are equal to Chinese Lilies. Flowers are large, pure white and possess a pleasing fragrance.

NARCISSUS PAPER WHITES come from France exclusively and the French Growers have had the worst season in the history of the industry. We are perfectly safe in stating that there will not be more than a twenty-five per cent crop of Paper Whites and that there will be but very few of a size larger than thirteen centimetres. The prices are correspondingly high. We are, therefore, offering Paper Whites this year in three sizes. The thirteen centimetre and up is the regular twelve hundred fifty packed case with which you are familiar. The twelve and thirteen centimetre mixed is also packed twelve hundred fifty to a case but is slightly smaller than the sizes with which you are familiar. The twelve centimetre size is slightly smaller than the mixed size but all of the bulbs are thoroughly cured and should produce an abundance of flowers. The smaller sizes are caused by the extreme drought through which all bulbs passed during the growing season.

	DOZ.	100	1000
12 C. M. and up	\$ 60	\$3 25	\$30 00
12 & 13 C. M. mixed	68	3 75	35 00
13 C. M. and up	75	4 25	40 00

CHINESE SACRED LILY

Used extensively for growing in gravel and water. The flowers are Polyanthus type white with yellow eye borne in clusters on long stems. Per dozen, \$1.35. Per basket of 30 bulbs, \$3.25. Per mat of 4 baskets, 120 bulbs, \$12.50.

Not less than six Bulbs of a kind at the dozen price, 25 at the 100, or 250 at the 1000

Vick's Dutch or Holland Grown Bulbs For Forcing and Outdoor Bedding



A BED OF VICK'S SEPARATE COLOR HYACINTHS

MINIATURE HYACINTHS

One of the odd results of the shifting of price on varieties of bulbs is that Miniature Hyacinths or Dutch Romans of excellent quality can now be bought for about the same price as tulips and as they can be used in so many more ways they are of infinitely greater value to the florist than tulips. Miniature Hyacinths furnish splendid cut flowers for funeral work and can be grown in flats the same as paper whites. In the following list will be found many new and valuable varieties as well as all of the best of the old standard sorts.

Per dozen, 40 cents; per 100, \$2.65; per 1000, \$23.00

SINGLE RED AND ROSE

Baron van Thuyll. Light rose	La Victoire. Carmine red
Gen. Pelissier. Deep red; early	Morena. Beautiful pink
Gertrude. Rosy pink	Norma. Pale waxy pink
Gigantea. Pale rose	Queen of the Pinks. Rosy pink.

Roi des Belges. Bright red

SINGLE WHITE

Arentine Arendse. Pure white	Hein Roozen. Best new white
Baroness van Thuyll. Pure white	La Franchise. Blush white
General Vetter. Blush white	La Grandesse. Pure white
Grande Blanche. Blush white	L'Innocence. Pure white

SINGLE BLUE

Charles Dickens. Blue tinged lilac	King of the Blues. Dark blue
Enchantress. Porcelain blue	La Peyrouse. Porcelain
Grand Maitre. Dark porcelain blue	Queen of the Blues. Porcelain blue
Schotel. Light blue	

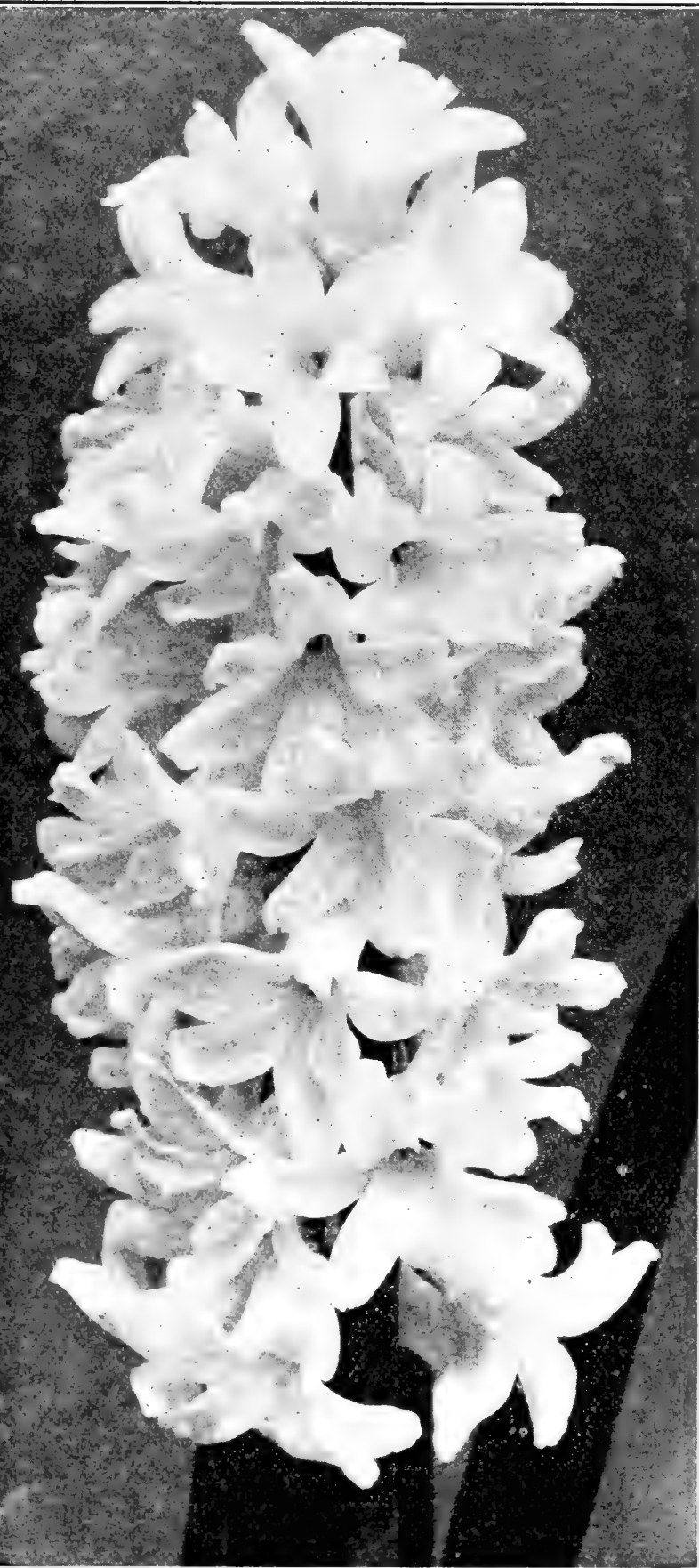
SINGLE YELLOW

King of the Yellows. Pure yellow	Yellow Hammer. Golden yellow (6)
---	---

Prices subject to tariff changes.

VICK'S HYACINTHS

First Size Bulbs. 17-18 cm., Especially Selected for Our Trade
An Unusual Opportunity to Buy Superfine Quality Bulbs at Low Prices



THE last three years have seen many changes in the bulb growing district of Holland. During the war the bulb growers were required by law to use every acre of available ground to plant food crops and were only allowed to plant a certain limited acreage in bulbs. As the natural result of this condition, the bulb growers, in order to reduce their stocks, discarded many run down and inferior varieties of bulbs retaining the newer and more promising varieties together with the best of the older sorts, so that in our catalogue of this year, while we offer the best of the old familiar varieties we also offer quite an addition of new names of proven merit that have heretofore been too expensive to catalogue, but are now on the same footing as other bulbs. †

Not less than 6 of one variety at dozen rate, 25 at hundred rate.

Where less than 6 are ordered, 10 cents each
 Special prices on larger quantities

SINGLE RED AND ROSE.

	Per Doz.	Per. 100
Baron van Thuyll, fine pink	\$0 90	\$6 00
Charles Dickens, delicate pink	90	6 00
Garibaldi, brilliant carmine	90	6 00
General de Wet, light pink	90	6 00
General Pelissier, brilliant carmine, very early	90	6 00
Gertrude, rosy pink	90	6 00
Gigantea, blush pink	90	6 00
Lady Derby, waxy pink, very large	90	6 00
La Victoire, brilliant carmine red	90	6 00
Lord Macaulay, rosy carmine	90	6 00
Morena, fine pink	90	6 00
Norma, blush pink	90	6 00
Queen of the Pinks, bright, rosy pink	90	6 00
Robert Steiger, deep red	90	6 00
Roi des Belges, bright red,	90	6 00
Rose à Merveille, rose, extra fine	90	6 00

SINGLE WHITE

Alba Superbissima, pure white	90	6 00
Albertine, extra fine, pure white	90	6 00
Arentine Arendse, pure white, very fine	90	6 00
Baroness van Thuyll, pure white	90	6 00
General Vetter, white tinged blush	90	6 00
Grande Blanche, blush white, large bells and spike	90	6 00

VICK'S HYACINTHS—Continued

SINGLE WHITE.

	Per Doz.	Per 100
Grandeur à Merveille, blush white	\$ 90	\$6 00
Hein Roozen, best new white . . .	90	6 00
La Franchise, waxy white . . .	90	6 00
La Grandesse, pure white . . .	90	6 00
L'Innocence, pure white . . .	90	6 00
Madame Van der Hoop, pure white	90	6 00
Queen Victoria, pure white . . .	90	6 00

SINGLE BLUE.

Charles Dickens, light blue . . .	90	6 00
Czar Peter, light porcelain blue, large spike	90	6 00
Enchantress, beautiful porcelain	90	6 00
Grand Lilas, porcelain-lilac . . .	90	6 00
Grand Maitre, dark porcelain blue	90	6 00
King of the Blues, deep blue . . .	90	6 00
La Peyrouse, light porcelain . . .	90	6 00
Perle Brilliant, new light blue, superior to Chas. Dickens.	90	6 00
Queen of the Blues, light blue . . .	90	6 00
Schotel, light porcelain, extra fine	90	6 00

SINGLE YELLOW.

City of Haarlem, very large, best pure yellow	90	6 00
Ida, golden yellow, early	90	6 00
King of the Yellows, deep yellow	90	6 00
Obelisque, pure yellow	90	6 00
Yellow Hammer, pure golden yellow, new	90	6 00

SINGLE PURPLE.

	Per Doz.	Per 100
Haydn, distinct mauve	\$0 90	\$6 00
Sir William Mansfield, purple mauve, large truss	90	6 00

DOUBLE RED AND ROSE.

Bouquet Royal, salmon pink . . .	\$1 00	\$6 50
Bouquet Tendre, carmine rose . . .	1 00	6 50
Chestnut Blossom, blush pink . . .	1 00	6 50
Grootvorst, light rose	1 00	6 50
Kohinoor, deep rose, new.	1 00	6 50
Lord Wellington, delicate pink	1 00	6 50
Noble Per Merite, deep rose . . .	1 00	6 50
Prince of Orange, dark rose . . .	1 00	6 50

DOUBLE WHITE.

Bouquet Royal, pure white	1 00	6 50
Grootvorstin, creamy white	1 00	6 50
Isabella, rosy white	1 00	6 50
La Tour d' Auvergne, pure white	1 00	6 50
La Virginite, blush white	1 00	6 50
Non plus ultra, pure white	1 00	6 50
Prince of Waterloo, waxy white	1 00	6 50

DOUBLE BLUE.

Bloksberg, light porcelain blue	1 00	6 50
Crown Prince of Sweden, violet blue	1 00	6 50
Garrick, bright blue	1 00	6 50
General Kohler, bright blue, large	1 00	6 50
Van Speyk, light blue, compact spike	1 00	6 50

DOUBLE YELLOW.

Jaune Supreme, bright yellow . . .	1 00	6 50
Sir Rowland Hill, pure yellow	1 00	6 50

UNNAMED HYACINTHS.

Our unnamed Hyacinths are made up of mixtures of named varieties and are used by many successful Florists for forcing, in place of the more expensive named kinds. For outdoor growing, this stock will give abundant satisfaction. The saving in price here is greater than on any other class.

Not less than 6 bulbs at the dozen rate, 25 at 100 rate, 250 at 1000 rate.

SINGLE MIXED

	Doz.	100	1000
Red, all shades	\$0 60	\$3 75	\$35 00
Dark Red	60	3 75	35 00
Rose and Pink	60	3 75	35 00
White, all shades	60	3 75	35 00
Pure White	60	3 75	35 00
Blush White	60	3 75	35 00
Blue, all shades	60	3 75	35 00
Dark Blue	60	3 75	35 00
Light Blue	60	3 75	35 00
Yellow	60	3 75	35 00
All colors	60	3 75	35 00

DOUBLE MIXED

	Doz.	100	1000
Red, all shades	\$0 65	\$4 00	\$37 50
Dark Red	65	4 00	37 50
Rose and Pink	65	4 00	37 50
White, all shades	65	4 00	37 50
Pure white	65	4 00	37 50
Blush White	65	4 00	37 50
Blue, all shades	65	4 00	37 50
Dark Blue	65	4 00	37 50
Light Blue	65	4 00	37 50
Yellow	65	4 00	37 50
All colors	65	4 00	37 50

Vick's Single Early Tulips

CHOICEST NAMED VARIETIES

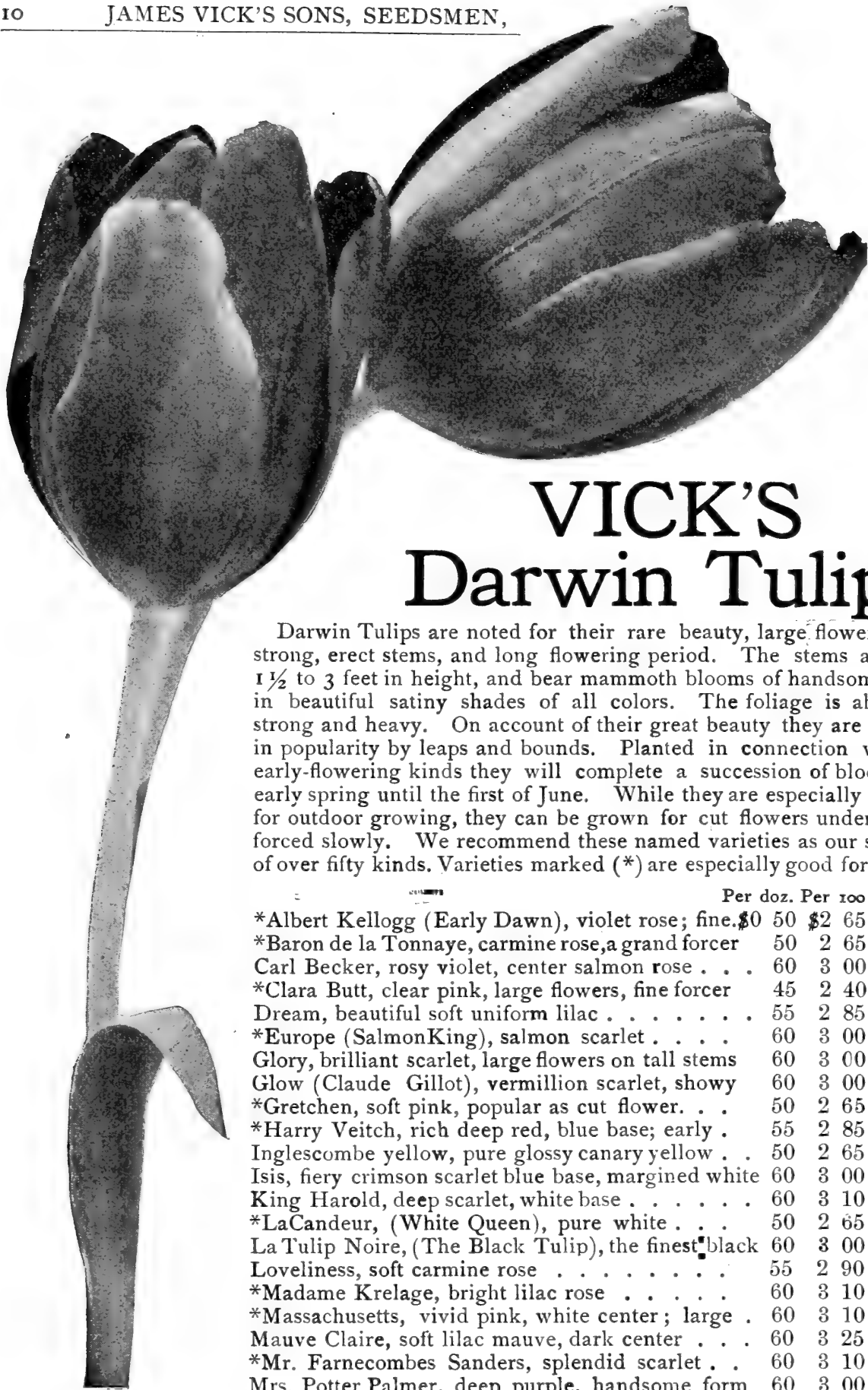
(9)

OUR list of varieties shown below has been thoroughly revised this season and we are confident that they are the very best of many hundreds available. You will find a number of new extra choice varieties offered now at prices within reach of all.

Not less than six bulbs of one variety at the dozen rate, nor less than twenty-five at the 100 rate, nor less than 250 at the 1000 rate

The Varieties marked (*) are superior for forcing.

	Per doz.	Per 100	Per 1000
Artus, bright scarlet, good bedder	\$0 40	\$2 25	\$19 00
*Belle Alliance, (Waterloo) scarlet, large flower, fragrant	50	2 65	24 00
*Chrysolora, golden yellow	50	2 60	23 50
*Cottage Maid, rose and white, pointed petals forces slowly	55	2 75	24 00
Cramoisi Brilliant, large flowers of brilliant dazzling red, lasts well.	40	2 15	18 50
Crimson King, fine crimson, large flower	40	2 15	18 50
Duchesse de Parma, red, with ruffled yellow edge	50	2 65	24 00
*Duc de Berlin, light red, golden yellow border, early, forces well.	40	2 25	19 50
Dusart, dark scarlet, very good for bedding, lasts well	45	2 50	22 00
*Flamingo, pink and white, deepens with age to brilliant rose	65	3 75	36 00
Fred Moore, bright orange, scarlet shaded, new	40	2 25	19 00
*Gold Finch, pure golden yellow. Superior to the Yellow Prince	45	2 40	21 00
Herman Schlegel (Primrose Beauty), sulphur yellow, orange shaded	40	2 00	16 50
*Joost Van Vondel, cherry red, white feathered, suffused rose outside	45	2 40	21 00
*Keizerskroon, (Grand Duc) red, golden edge,	45	2 50	22 50
*King of the Yellows, deep golden yellow, very early	45	2 50	22 50
*Lady Boreel (Joost Van Vondel, white), enormous new white	60	2 90	27 00
*L'Immaculee, pure white	45	2 40	21 50
*La Reine (Queen Victoria) beautiful rosy white	40	2 00	16 50
La Reine Maxima (Rose Hawk) extra large white, edged pink	55	2 80	26 00
Pink Beauty, bright rosy pink, shading to blush white	60	3 50	33 00
*Pottebakker, white	60	3 25	30 00
* " scarlet	50	2 60	23 50
* " yellow, occasionally striped red	45	2 40	21 00
*President Lincoln, violet	50	2 60	23 50
*Prince of Austria, beautiful orange, fragrant	50	2 60	23 00
Princess Marianne, creamy white suffused with pink	50	2 50	23 00
*Proserpine, beautiful rose crimson	70	4 35	40 00
Rosamundi (Huikman), pink and white	65	3 45	32 00
*Queen of the Netherlands, soft rosy white, large flowers	50	2 80	26 00
*Rose Grisdelin, pink and white	30	2 00	18 00
*Rose Luisante, beautiful deep silky rose. The finest rose tulip yet produced, good for forcing or bedding	70	4 35	40 00
*Thomas Moore, orange, a beautiful color	30	2 00	17 50
Vermillion Brilliant' deep vermilion-scarlet.	65	3 75	35 00
*White Hawk, (Albion) pure white, splendid for forcing	65	3 45	32 00
White Swan. Another popular pure white for out-of-doors	50	2 75	25 00
*Yellow Prince, fine yellow, sweet scented	30	2 00	18 00
Extra Superfine, mixed	25	1 75	16 00
First Quality, mixed	25	1 65	15 50
Unnamed in Separate Colors, white	30	2 00	17 00
" " " " pink	30	2 00	17 00
" " " " yellow	30	2 00	17 00
" " " " red	30	2 00	17 00
" " " " variegated	30	2 00	17 00
" " " " rose	30	2 00	17 00



VICK'S Darwin Tulips

Darwin Tulips are noted for their rare beauty, large flowers, long, strong, erect stems, and long flowering period. The stems are from 1½ to 3 feet in height, and bear mammoth blooms of handsome shape in beautiful satiny shades of all colors. The foliage is abundant, strong and heavy. On account of their great beauty they are growing in popularity by leaps and bounds. Planted in connection with the early-flowering kinds they will complete a succession of bloom from early spring until the first of June. While they are especially adapted for outdoor growing, they can be grown for cut flowers under glass if forced slowly. We recommend these named varieties as our selection of over fifty kinds. Varieties marked (*) are especially good for forcing.

	Per doz.	Per 100	Per 1000
*Albert Kellogg (Early Dawn), violet rose; fine.	\$0 50	\$2 65	\$24 00
*Baron de la Tonnaye, carmine rose, a grand forcer	50	2 65	23 50
Carl Becker, rosy violet, center salmon rose . . .	60	3 00	28 00
*Clara Butt, clear pink, large flowers, fine forcer	45	2 40	22 00
Dream, beautiful soft uniform lilac	55	2 85	26 00
*Europe (Salmon King), salmon scarlet	60	3 00	28 00
Glory, brilliant scarlet, large flowers on tall stems	60	3 00	27 50
Glow (Claude Gillot), vermillion scarlet, showy	60	3 00	28 00
*Gretchen, soft pink, popular as cut flower. . .	50	2 65	23 00
*Harry Veitch, rich deep red, blue base; early .	55	2 85	26 00
Inglescombe yellow, pure glossy canary yellow . .	50	2 65	24 00
Isis, fiery crimson scarlet blue base, margined white	60	3 00	27 00
King Harold, deep scarlet, white base	60	3 10	29 00
*LaCandeur, (White Queen), pure white	50	2 65	24 00
La Tulip Noire, (The Black Tulip), the finest black	60	3 00	27 50
Loveliness, soft carmine rose	55	2 90	27 00
*Madame Krelage, bright lilac rose	60	3 10	29 00
*Massachusetts, vivid pink, white center; large .	60	3 10	29 00
Mauve Claire, soft lilac mauve, dark center . . .	60	3 25	30 00
*Mr. Farnecombe Sanders, splendid scarlet . .	60	3 10	29 00
Mrs. Potter Palmer, deep purple, handsome form	60	3 00	27 00
*Nauticus, silky purplish rose	50	2 65	24 00
*Painted Lady, creamy-white, tinted heliotrope	50	2 55	23 00
Psyche, beautiful rich soft rose, shaded silvery rose	50	2 65	24 00
Pride of Haarlem, brilliant rosy carmine, sweet scented, early forcer . .	45	2 40	22 00
*Phillipe de Comminet, velvet purple, early	55	2 85	26 00
*Rev. Eubank, heliotrope-lilac, fine for forcing.	55	2 75	25 00
Sophrosina, light pink shaded rose; new	60	3 25	30 00
*The Sultan, rich maroon black, blue base, perfect form	45	2 50	22 50

VICK'S DARWIN TULIPS - continued.

	Per doz.	Per 100	Per 1000
Whistler, vivid crimson scarlet, blue base, the best red Darwin	65	3 45	32 00
*William Copeland, (Sweet Lavender) delicate rare lavender, best forcer	60	3 25	30 00
Extra fine Darwin Mixture.	35	2 10	18 00

Old Dutch Tulips

The Old Dutch Tulips are again coming into prominence and they certainly deserve to be used much more largely than they have for several years past. The Breeders are especially desirable. In them nature's happiest color combinations of purple and mauve, bronze and gold, brown and silver tints are revealed. They harmonize with high class house furnishings as if they were made for such settings. The old varieties with their gaudy, oftentimes flashy colors have been gradually discarded until now we offer in this group the most artistic and pleasing combinations of colors found anywhere in the tulip family.

	Per doz.	Per 100	Per 1000
Bizarres, yellow ground, mixed varieties	\$0 50	\$2 65	\$24 00
Byblooms—Roses, white ground, mixed varieties	50	2 65	24 00
Byblooms Violets, feathered violet on white ground	50	2 65	24 00
Rembrandts Mixed	60	2 90	27 00

BREEDER TULIPS

	Per doz.	Per 100	Per 1000
Black Chief, deep velvety purple almost black	\$0 65	\$3 75	\$35 00
Bronze Queen, soft bronze or buff tinged apricot	55	3 00	28 00
Cardinal Manning, exquisite unique blend of mauve and rose	60	3 25	30 00
Jaune d'Oeuf (Sunrise) golden, shaded apricot to orange red	55	2 85	26 00
La Singuliere, silvery white, flushed deep cherry	65	3 45	32 00
Medea, salmon carmine, shaded heliotrope	60	2 85	26 00
Mon Tresor, bright carmine red,	65	3 45	32 00
Prince of Orange, (Sunset) terracotta, orange scarlet edge	70	3 90	37 00
Yellow Perfection, light bronze yellow, shaded deep gold	65	3 45	32 00
All Colors Mixed	50	2 60	23 50

Vick's May Flowering Tulips

During the last few years there has been an immense sale on many of these varieties. They surpass the earlier kinds for out-door growing because of the length of their stems. Many of them have large, open flowers, while others, especially the so-called "Botanical Tulips" though unusual in shape, are exquisitely beautiful.

	Per doz.	Per 100	Per 1000
Bouton d'or (Ida, Golden Beauty)	\$0 50	\$2 55	\$23 00
Caledonia, bright orange vermillion, center greenish black, very unique	50	2 65	24 00
Elegans, white, splendid	65	3 50	33 00
Elegans, carmine	50	2 65	24 50
Gesneriana spathulata. A splendid, rich, crimson-scarlet black base	50	2 70	25 00
Gesneriana lutea. Large, deep yellow flower of perfect form	50	2 65	24 50
Gesneriana rosea, rose	55	2 85	26 00
Inglescombe Pink (Salmon Queen)	50	2 65	24 00
Isabella (Shandon Bells, Blushing Bride) cream turning to carmine	50	2 65	24 00
La Candeur, white	55	3 00	27 50
La Merveille, orange-scarlet, fragrant	50	2 65	24 00
Macrospila, sweet-scented, scarlet	55	3 00	28 00
Moonlight, new soft yellow, extra large, elongated flowers	55	2 90	27 00
Mrs. Moon, deep pure yellow, reflexed petals	55	3 00	28 00
Picotee (Maiden's Blush) pure white, edged rose	45	2 50	22 50
Primrose Beauty, soft yellow or primrose changing to white, new.	55	2 85	26 00
Retroflexa, yellow recurving petals.	50	2 65	24 00
Royal White, pure white, center creamy yellow	60	3 25	30 00
Striped Beauty, rose flecked crimson and white, extra fine	55	3 00	28 00
The Fawn, soft fawn or dove color shading to blue	50	2 65	24 00
Vitellina, large pale primrose changing to white with age	55	3 00	28 00
May Flowering mixed	35	2 00	18 00

Vick's Selected Double Tulips

EARLY VARIETIES

The following list covers the best and most popular varieties of Double Tulips. Those kinds marked with an asterisk (*) are especially recommended for forcing. All varieties can be grown to advantage in outdoor bedding.

	Per doz	Per 100	Per 1000
*Boule de Neige, pure white, large full peony-like flowers	\$0 50	\$2 65	\$24 00
*Crown of Gold, finest yellow shaded orange, fine forcer	50	2 75	25 00
Crown of Roses, Pink, good forcer	65	4 00	37 00
Gloria Solis, bronze, orange and crimson; early	50	2 65	24 00
La Candeur, white; early, one of the best for bedding	50	2 65	24 00
*Lord Beaconsfield, deep cherry rose, very beautiful.	50	2 75	25 00
*Lucretia, bright pink, large well-formed flowers, good forcer . .	50	2 60	23 50
*Murillo, pink and white; early	25	1 65	15 50
*Rubra maxima, best dark scarlet; one of the best	50	2 60	23 50
*Salvator Rosa, fine deep rose edged light pink; forces well . . .	50	2 60	23 50
*Schoonoord (White Murillo) best pure white; splendid for forcing.	55	2 70	25 00
Tea Rose, soft sulphur yellow, slightly orange-shaded	50	2 60	23 50
Tournesol Red, rich scarlet, yellow edged; early forcer	60	3 25	30 00
*Tournesol yellow, true; extra large and showy	60	3 25	30 00
Fine Quality Mixed.	30	1 90	17 00
Superfine Double Mixture, early sorts	40	2 25	20 00
Yellow Rose, pure yellow, sweet scented, fine, late variety . . .	55	2 70	25 00

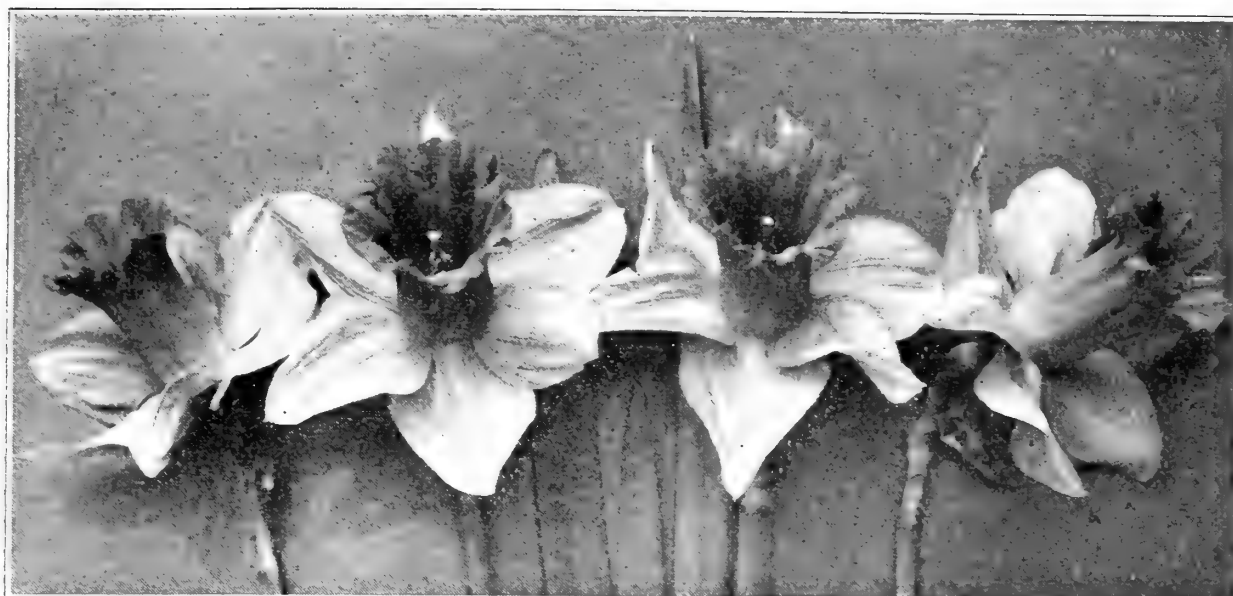
Parrot or Dragon Tulips

Very popular long stem Late Flowering Tulip. The most peculiar formed and brilliant colored of all tulips. The name "Parrot" refers to its coloring.

	doz.	100	1000
Admiral de Constantinople, red	40	\$2 40	\$22 00
Café Brun, rich brown	40	2 40	22 00
Cramoisi Brilliant, scarlet	40	2 40	22 00
Lutea, yellow	40	2 40	22 00
Markgraaf, pink and white	40	2 40	22 00
Perfecta, red striped	40	2 40	22 00
Extra Superfine Mixture	40	2 25	20 00

Very popular on account of their brilliant colorings and peculiar form of flower.





VICK'S SELECTED NARCISSUS

NARCISSUS are the most effective of all bulbs for use in shrubbery and for a border in front of massed bushes or hedges. Bicolor Empress, Yellow Emperor and Golden Spur are especially desirable. For indoor culture, Narcissus are, of course, indispensable, especially the Polyanthus varieties. In addition to all of the best standard varieties you will find in our list this year a number of additions, which we feel confident will make many friends. We hope that our division of classes this year may be of especial value.

AJAX OR GIANT TRUMPET VARIETIES

	Per doz.	Per 100	Per 1000
Bicolor Empress. One of the very best; white perianth, yellow trumpet, first size, round bulbs	\$0 65	\$3 65	\$34 00
“ “ Double nose bulbs. Will produce 2 or 3 blooms	80	4 50	40 00
“ Princeps maximus, primrose perianth, yellow trumpet, round	55	3 00	27 00
“ “ Double nose bulbs	70	3 75	34 00
“ Victoria, creamy white perianth, yellow trumpet, round	65	3 50	30 00
“ “ double nose bulbs. Will produce 2 or 3 blooms	80	4 75	42 00
Emperor, deep yellow, large, fine, first size, round bulbs	65	3 50	30 00
“ double nose bulbs, extra fine	80	4 50	40 00
Glory of Leiden, full deep yellow. One of the largest of the Giant Trumpet varieties. Double nose bulbs	80	5 00	44 00
Golden Spur, fine yellow, large flower, early, first size, round bulbs	65	3 50	30 00
“ “ double nose bulbs	70	3 75	34 00
“ “ mammoth double nose bulbs	80	5 25	48 00
Henry Irving, yellow, fine, early	70	4 20	38 00
Mme de Graaff. One of the largest and finest of the white trumpet varieties. Perianth white, trumpet primrose, passing off white. Double nose bulbs	80	4 50	40 00
Trumpet Major, golden yellow, standard single Daffodil, commonly called Single Von Sion	65	3 50	32 00
Large Trumpet varieties mixed	50	2 60	23 00

MEDIUM TRUMPET OR CUP

Incomparabilis Gloria Mundi, clear yellow perianth; broad orange scarlet crown	65	3 50	30 00
“ Sir Watkin, sulphur yellow; cup bright yellow, tinged orange. First size round bulbs	65	3 50	30 00
“ Mammoth double nose bulbs	75	4 35	40 00

MEDIUM TRUMPET OR CUP—Continued

	Per doz	Per 100	Per 1000
Barri Conspicuous, broad soft yellow perianth; short cup edged orange scarlet	\$0 55	3 10	28 00
Leedsii, Dutchess of Westminster. Large pure white perianth, long soft canary yellow cup	75	4 35	40 00
" Mrs. Langtry. Broad white perianth; cup white, primrose edge	50	2 65	24 00

SMALL CUP VARIETIES

	Per doz.	Per 100	Per 1000
Poeticus Ornatus, pure white, sweet-scented, good forcer, round . . .	\$0 50	\$2 60	\$23 00
Double nose bulbs	65	3 50	30 00
" Pheasant's Eye, pure white perianth, yellow cup, edged with crimson. Not for forcing	55	3 10	28 00
" Burbidgei. White, cup edged orange. A month earlier than the older sorts	55	3 00	27 00
Poetaz Aspasia. White perianth, yellow eye; 4 to 5 flowers on stem	65	3 90	36 00
" Elvira. Pure white, yellow cup edged orange, 3 to 4 flowers on a stem	65	3 90	36 00
" Irene. Perianth sulphur yellow, cup orange, 8 to 9 flowers on a stem	70	4 25	38 00

DOUBLE NARCISSUS

	Per doz	Per 100	Per 1000
Albo pleno odorato, white, fragrant	\$0 50	\$2 75	\$24 00
Incomparable, light yellow	65	3 65	33 00
Orange Phoenix, white and orange	65	3 65	33 00
Silver Phoenix or Sulphur Crown	60	3 00	27 00
VonSign, known as "Double Yellow Daffodil," first size, round	60	3 40	31 00
" second size double nose bulbs	70	3 75	34 00
" double nose, extra large bulbs producing 2 to 3 flowers	80	5 00	44 00
Extra fine mixed double varieties	65	3 25	28 00

POLYANTHUS NARCISSUS

The flowers are produced in clusters or trusses. Not hardy in this climate, but for flowering in pots in the house they are unsurpassed.

	Per doz	Per 100	Per 1000
Gloriosa, white, orange cup	\$0 75	\$4 35	\$40 00
Grand Monarque, white and yellow	75	4 35	40 00
Grand Soliel d'Or, bright yellow	75	4 35	40 00
Her Majesty, beautiful white	75	4 35	40 00
Newton, fine yellow	75	4 35	40 00
Mont Cenis, white, yellow cup	75	4 35	40 00
Queen Victoria, white and yellow. Extra early	75	4 35	40 00
White Pearl, pure white, good forcer	75	4 35	40 00
Paper White, grandiflorus (see description, page 5) 12-13 C M Mxd.	68	3 75	35 00
All colors mixed	65	3 50	32 00

CHINESE SACRED LILIES

	Per doz	Per 100	Per 1000
Basket of 30 bulbs \$3.25 120 bulbs (4 Baskets) \$12 50	\$1 35		

JONQUILS

Valued for their lovely golden and deliciously sweet-scented flowers. They are perfectly hardy and flower very early in the spring. Excellent for house blooming.

	Per doz	Per 100	Per 1000
Largest Double, sweet-scented, golden yellow	\$0 50	\$2 60	\$23 00
Single, sweet-scented, golden yellow	50	2 60	23 00
Campernel, (Great Jonquil), yellow, fragrant	50	2 75	25 00
Odorous rugulosus (Improved Campernel)	50	2 75	25 00
Tenuior (True Silver Jonquil)	50	2 75	25 00



VICK'S CROCUS

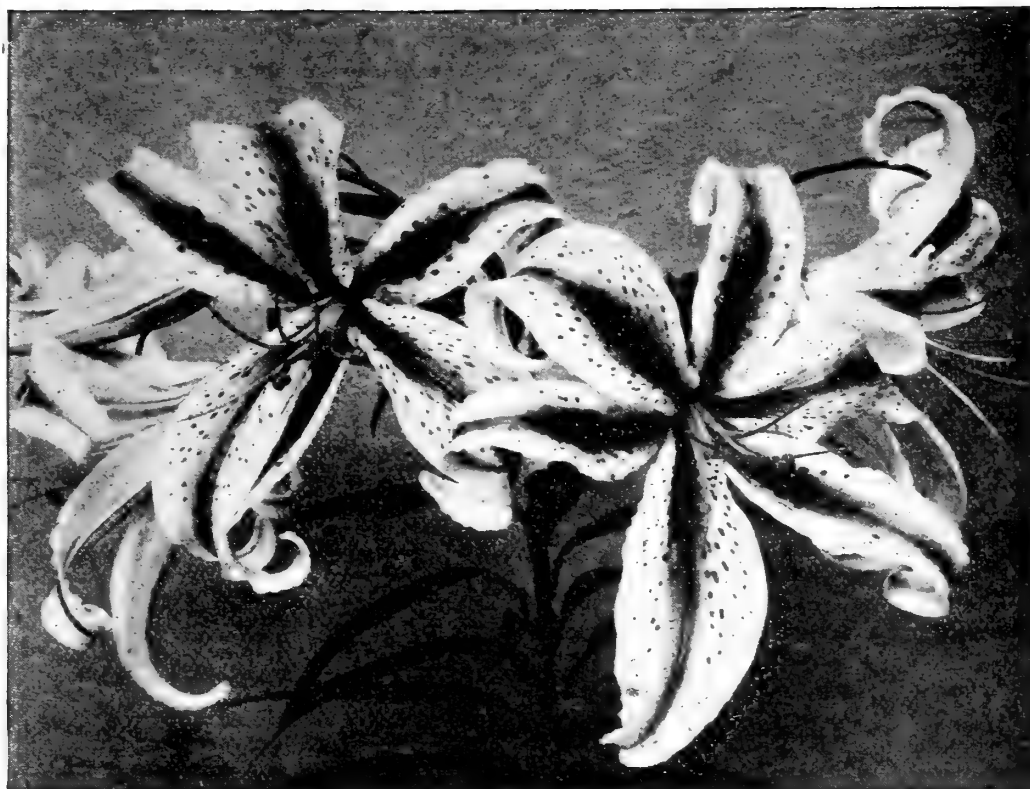
NAMED AND MIXED VARIETIES

There is a rapidly growing demand for Crocus both for forcing and outdoor growing. Our stock has been so uniformly satisfactory that our trade has increased enormously in the last few years.

The choicest of all the named varieties. Any of these varieties at 25 cts. per doz., except as noted.

	Per 100	Per 1000	Per 100	1000
Not less than 50 sold at the 100 price.				
Blue and Purple	\$ 85	\$5 50	Albion, striped	\$1 10 \$ 8 50
White	85	5 50	Baron Von Brunow, dark blue.	1 10 8 50
Striped and Variegated . . .	85	5 50	Grand Concurrent, white. . .	1 10 8 50
All colors mixed	85	5 50	King of the Blues, purple. . .	1 10 8 50
Large Yellow, mammoth size			King William, dark blue . . .	1 10 8 50
Per doz. 40 cts.	1 85	16 00	Lord Palmerston, blue	1 10 8 50
" " First size			Mammoth, white.	1 10 8 50
Per doz. 30 cts.	1 40	12 00	Mammoth, yellow	1 85 16 00
" " Second size			Margot, light blue	1 10 8 50
Per doz. 20 cts.	1 10	9 00	Mont Blanc, pure white. . . .	1 10 8 50
			Non Plus Ultra, variegated. . .	1 10 8 50
			President Grant, striped. . . .	1 10 8 50
			Purpurea grandiflora,	1 50 13 00
			Queen Victoria, white	1 10 8 50
			Sir Walter Scott, striped. . . .	1 10 8 50

A number of varieties of bulbs are omitted from our Catalogue this year because of Government restrictions preventing their importation.



LILIUM AURATUM

HARDY LILIES

The following list of Hardy Lilies of both Japanese and native culture will be found invaluable by florists in providing a supply of the choicest kind of cut flowers for use during the early summer months. These bulbs may be planted this fall, or they may be planted in the early spring and they will give you flowers at a time when flowers are scarce, at a fraction of the cost of indoor lilies, and once established they are a fixture, as they come up year after year and only require the yearly addition of fertilizer and ordinary cultivation.

The prices on this page are based on the best information available at the time this catalogue goes to press, but are subject to revision up or down according to the market at the time of shipment.

	Per doz.	Per 100
Lilium Album. Beautifully formed white lily, the petals of which are back curved instead of cup shaped like the indoor lilies. 3 to 4 feet high, profuse blooming	\$3 50	\$25 00
Lilium Auratum. (Gold Band Lily of Japan.) Largest and best known of the Japanese lilies. Color, white with crimson spots with golden yellow stripe through center of each petal. Fertilizer must be well mixed with the soil so that it will not come in contact with the roots. 8 to 9 inches.	3 50	25 00
Lilium Candidum. One of the most popular of all the outdoor lilies, and popularly known as the "Madonna Lily." Comes in three sizes: Large size Extra size Mammoth size	} Prices on application.	
Lilium Magnificum. Crimson. One of the finest of the Speciosum lilies	3 50	25 00
Lilium Melpomene. Crimson, spotted with deep blood red, each petal distinctly bordered with white	3 00	20 00
Lilium Rubrum. Very prolific blooming. White and rose grounds, spotted with crimson. All lilies of this class have back curved petals	3 50	25 00
Lilium Elegans Atrosanguineum. Dark blood red with dark spots	2 50	18 00
" " Batemani. Color, apricot yellow	2 50	18 00
" " Incomparable. Deep crimson, slightly spotted with black	2 50	18 00
" " Indian Chief. Bright flame color	2 50	18 00
" " Wallacei. Vermillion-orange, spotted	2 50	18 00
Lilium Tigrinum Splendens. Single Tiger Lilies	2 50	18 00
" " fl. pl. Double " "	2 50	18 00

N. B.—It is good practice to cover the ground that is to be used for hardy lilies with two or three inches of stable manure or litter to prevent the ground freezing so that if the Japanese bulbs arrive in this country late, as they sometimes do, you will still be able to plant them.

PLANTS AND BULBS

LIMITED SPACE does not permit us to enumerate our entire list of Plants and Bulbs. Prices on other varieties will be furnished upon request. It is our aim to offer the best stocks obtainable—strong, true to name, and free from disease and insects. We prefer to furnish the Best, not the Cheapest. Packing charged at cost. Unless so requested, we never ship plants by freight. To insure safe packing, greenhouse plants are removed from the pots.

Tender Plants and Bulbs.

25 or over at 100 rate; 250 at 1000 rate.

	Per doz.	Per 100		Per doz.	Per 100
Abutilons, in variety	\$0 85	\$ 6 00	Cyperus alternifolius	85	6 00
Amaryllis Johnsoni. Large bulbs, each 25c	2 50	20 00	Dahlias	1 00	10 00
Amaryllis Vittata Hybrids, Giant flowering;	1 50	10 00	Dracaena Indivisa, field grown, 2 1/4-inch pots	80	5 00
Amaryllis Chlidanthus fragram	1 50	10 00	3-inch pots	1 00	8 00
Achania Malvaviscus	85	6 00	4-inch pots	2 25	15 00
Asparagus plumosus nanus 2 1/4-inch pots	80	5 00	Ficus elastica (Rubber Tree) 4-inch pots, (Sold out)		
3-inch pots	1 25	8 00	5-inch pots, (Sold out)		
Sprengeri, 2 1/4-inch pots	1 25	8 00	Fuchsia, general collection	85	6 00
3-inch pots	80	5 00	Ferns, for fern dishes, Adiantum, Cuneatum, Aspidium, Tsussimense, Cyrtomium Falcatum, Pteris, Cretica Albo lineata, Hastata, Serrulata, Wilsoni, Wimsetti,	85	6 00
Begonias Rex varieties, 2 1/4-inch pots	1 75	12 00	Nephrolepis Bostoniensis, (Boston Fern) 2 1/2-inch pots	1 50	10 00
Carnations, general collection, from open ground. Strong, well branched, field-grown plants ready for the bench.			Large plants from bench, each 75c. and \$1.00, according to size.		
Beacon, splendid scarlet	Per 100 \$10 00	Per 1000 \$95 00	Nephrolepis Whitmani		
Matchless, superb white	10 00	95 00	2 1/2 inch pots.	1 50	10 00
C. W. Ward, rose pink	10 00	95 00	Nephrolepis Scotti. The new dwarf Boston Fern. 2 1/2-inch pots	1 50	10 00
White Enchantress	10 00	95 00	Large plants from bench, Sold out		
Enchantress Supreme,	15 00	120 00			
Calla, Little Gem (green plants)	Per doz. 85	Per 100 6 00			
Cannas, general collection	75	5 00			
Carex Japonica variegata	85	6 00			
Cleveland Cherry, strong field-grown plants	1 50	10 00			



INTERIOR VIEW OF ONE OF OUR FERN HOUSES

We have a fine lot of Ferns in 2 1-2 in. pots ready to ship this fall, including a good assortment of standard varieties as listed above

Tender Plants & Bulbs (con't.)

Ferns—	Per doz.	Per 100
Teddy, Jr. Plants from bench, two sizes each, 75c. and \$1 00.		
Gladiolus, mixed	\$ 30	\$ 2 00
Jasminum grandiflorum	85	6 00
Lemon Verbena	85	6 00
Madeira Vine	40	2 00
Oleander, double pink, 3-in. pots	2 00	15 00
Variegated, 3-inch pots	2 00	15 00
Otaheite Orange, 3 1/2 in. pots		Sold out
Extra strong plants 4-in. pots		Sold out
Passiflora	85	6 00
Primroses, single white or pink	85	6 00
Baby Primrose (P. Forbesii)	85	6 00
Roses, monthly, 3 in. pots	2 25	15 00
Smilax	75	6 00
Swainsonia Alba	75	6 00
Vinca major var., field grown	1 75	12 00

Hardy Shrubs and Vines

	Per Doz	Per 100
Akebia quinata, 2 year	\$2 25	\$15 00
Ampelopsis quinquefolia	2 25	15 00
Veitchii, field grown	3 00	30 00
Aristolochia Siphon		Sold out
Bignonia radicans	2 00	15 00
Buddleia Variabilis	2 00	15 00
Clematis paniculata, 2 year	1 75	12 00
3 year	2 00	15 00

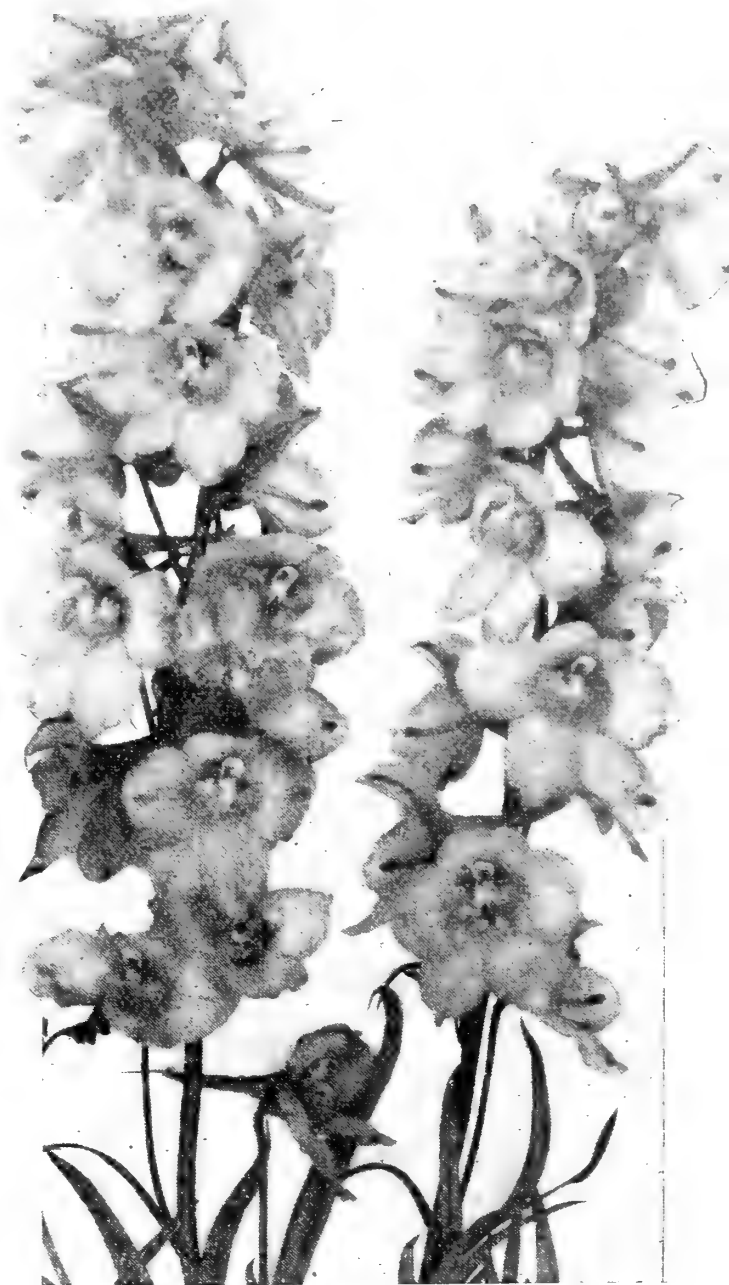
	Per Doz	Per 100
Jackmanii, Madam Edouard Andre and Henryi		Sold out
Cornus, Elegantissima	\$2 25	\$18 00
Mascula	2 25	18 00
Honeysuckle, Hall's Japan.	2 00	15 00
Hydrangea paniculata grand. 2 year	6 00	45 00
Ivy, English, 2 1/2 inch pots	75	2 00
3 " "	1 00	7 00
" " plants from field	1 50	10 00
Roses, Hybrid Perpetuals 2 year, each 50 cts.		
Caroline Mariesse, 1 year	3 00	20 00
" " 2 "	5 50	40 00
Ramblers, Crimson, Pink, White, Yellow, 2 yr.	3 50	25 00
Philadelphia Rambler, 2 year	3 50	25 00
Dorothy Perkins, 2 year	3 50	25 00
Lady Gay, 2 year	3 50	25 00
Tausendschon, 2 year	4 25	30 00
Excelsia, or Red Dorothy Perkins 2 yr.	3 50	25 00
3 "	4 50	35 00
Spiraea Arguta, Billardi, Billardi alba, Bumalda, Douglassi, Anthony Waterer, Van Houtteii, Calosa alba, Forsythia, 2 to 3 feet high	2 50	18 00
Syringa Grandiflora	1 75	15 00
Tamarix Africana, 2 to 3 feet Each 40 cents	3 50	



View of a block of healthy, vigorous Tausendschon Roses.

Hardy Bulbs and Roots

	Per Doz	Per 100
Achillea The Pearl, Millefolium roseum, tomentosum	\$1 50	\$10 00
Aegopodium	1 50	10 00
Alyssum Saxatile, compactum	1 75	12 00
Anchusa Italica (Dropmore variety)	1 50	10 00
Anthemis Tinctoria	1 50	10 00
Anemone, Queen Charlotte, Whirlwind, Japonica Alba	1 75	12 00
Aquilegia chrysantha and cœrulea, Skinneri, Erskine Park Hybrids, double mixed and single mixed	1 50	10 00
Armeria (Thrift or Sea Pink)	1 50	10 00
Arabis alpina	1 50	10 00
Artemisia Latifolia	1 50	10 00
Belladonna, heavy 2 year	1 75	12 00
Cerastium Tomentosum	1 50	10 00
Chives	1 50	10 00
Cinnamon Vine	1 50	10 00
Campanulas, Media or Canterbury Bell, Carpatica Blue and White, Persicifolia Blue and White, Pyramidalis, Blue and White	1 50	10 00
Centaurea Mont. alba	1 50	10 00
Coreopsis lanceolata grandifl.	1 50	10 00
Daisy, Shasta	1 50	10 00
Delphinium, Belladonna, Elatum, Formosum, Formosum Coelestinum, Sinensis	1 50	10 00
Digitalis, in variety	1 50	10 00
Erianthus Ravennae	1 50	10 00
Eulalia Japonica variegata	1 50	10 00
gracillima univitata	1 50	10 00
zebrina	1 50	10 00
Funkia Japonica, light blue	1 75	12 00
undulata media picta, var'd	1 75	12 00
Alba, white	1 75	12 00
Gaillardia grandiflora	1 50	10 00
Genista Tinctoria	1 50	10 00
Geranium sang.	1 50	10 00
Gypsophila paniculata	1 50	10 00
Helenium	1 75	12 00
Hibiscus, Hardy Large-flow'g		
Crimson Eye, Militaris	1 50	10 00
Hemerocallis flava, Yellow Day Lily	1 75	12 00
Hemerocallis Aurantiaca Major, or Golden Day Lily, each 30 cents	2 75	15 00
Helianthus latæfrons, Maximiliana, Multi. Plenus	1 50	10 00
Helianthemum Vulgare	1 50	10 00
Hollyhocks, in colors, field grown roots, double	1 50	10 00
New Mam. Fr'd Allegheny	1 50	10 00
Hyacinthus	75	5 00
Iris Kæmpferi, named	1 50	10 00
" mixed	1 50	10 00
Germanica, mixed	1 25	8 00



Delphinium, Belladonna the finest of the light blue Delphinium.

	Per Doz	Per 100
Germanica, named	1 25	8 00
Lamium Purpureum	1 50	10 00
Lavender, sweet scented	1 50	10 00
Lobelia cardinalis	1 50	10 00
Lupinus	1 50	10 00
Lychnis Chalcedonica, Viscaria-Viscaria fl-pl	1 50	10 00
Lycoris, squamigera		Sold out
Lythrum roseum superbum	1 50	10 00
Monarda didyma	1 50	10 00
Pardanthus Sinensis	1 50	10 00
Pentstemon Coerulea	1 50	10 00
" Barbatus Torreyii	1 50	10 00
Perennial Pea, pink, crimson, red	1 50	10 00
Peonies, fine collection	4 25	30 00
White	4 25	30 00

Hardy Plants & Roots (Con't.)

	Per Doz	Per 100
Perennial Phlox, named varieties, field grown . . .	\$1 75	\$12 00
Phlox Subulata, The Bride	1 50	10 00
Physostegia, Virginica, alba, caerulea	1 50	10 00
Pinks, fine collection (clumps)	1 50	10 00
Platycodon grandiflorum . . .	1 50	10 00
Poppy, Oriental	1 75	12 00
Poppy, Iceland, white, yellow and orange	1 50	10 00
Pyrethrum roseum	1 50	10 00
Rudbeckia Golden Glow . . .	1 50	10 00

	Per doz	Per 100
Newmani, purpurea	\$1 50	\$10 00
Salvia Pratensis	1 75	12 00
Sedum, in variety	1 50	10 00
Spiræa, aruncus, palmata, elegans	1 50	10 00
Stokesia cyanea	1 50	10 00
Sweet William, Crimson, White, Holborn Glory and mixed .	1 50	10 00
Thermopsis Caroliniana	1 50	10 00
Valeriana Rubra	1 50	10 00
Veronica spicata	1 50	10 00
Viscaria Splendens.	1 50	10 00
Yucca filamentosa, 1 year . . .	1 50	10 00

Vick's Famous Flower Seeds

NOTE—Where flower seeds are quoted at 10 cents per ounce, if smaller quantities are wanted we will send our regular packets at 50 per cent. discount from retail prices.

ANTIRRHINUM NANUM GRANDIFLORUM

A new type of Stocky Giant Flowered Half Dwarf Antirrhinum, bred especially for cut flowers. This splendid class, magnificently colored, has very large spikes or heads and can be grown with success either under glass or out of doors, and we believe you will find it more desirable for Greenhouse culture than some of taller varieties. See cut for type of flowers, we can supply the following varieties; 1/8 oz. 30 cents; 1/4 oz. 50 cents; 1 oz. \$1.50.

Pink and Terra-Cotta Shades, a new class of art shades, ranging from pink and orange to terra-cotta, very showy.

Amber Queen, canary yellow over-laid chamois pink, golden lip.

Coral Pink, rich deep rose, white throat.

Fair Maid (New) deep flesh pink, white centre

Golden Morn, raspberry red and old golden with golden lip.

Morning Glow, bright terra-cotta orange.

Purity, (New.) pure glistening white, very fine.

ANTIRRHINUM MAJUS

New Giant - Flowered

Giant flowered bedding type

1/8 oz. 15 cts; 1/4 oz. 25 cts; 1 oz. 85 cts.

Silver Pink, (Special Florists) strain.

Venus, Shell Pink.

Queen Victoria, large pure white.

White.

Brilliant, (scarlet, yellow and white.)

Deep Scarlet.

Light Rose.

Deep Rose.

Firefly, (scarlet with white throat.)

Bright Crimson.

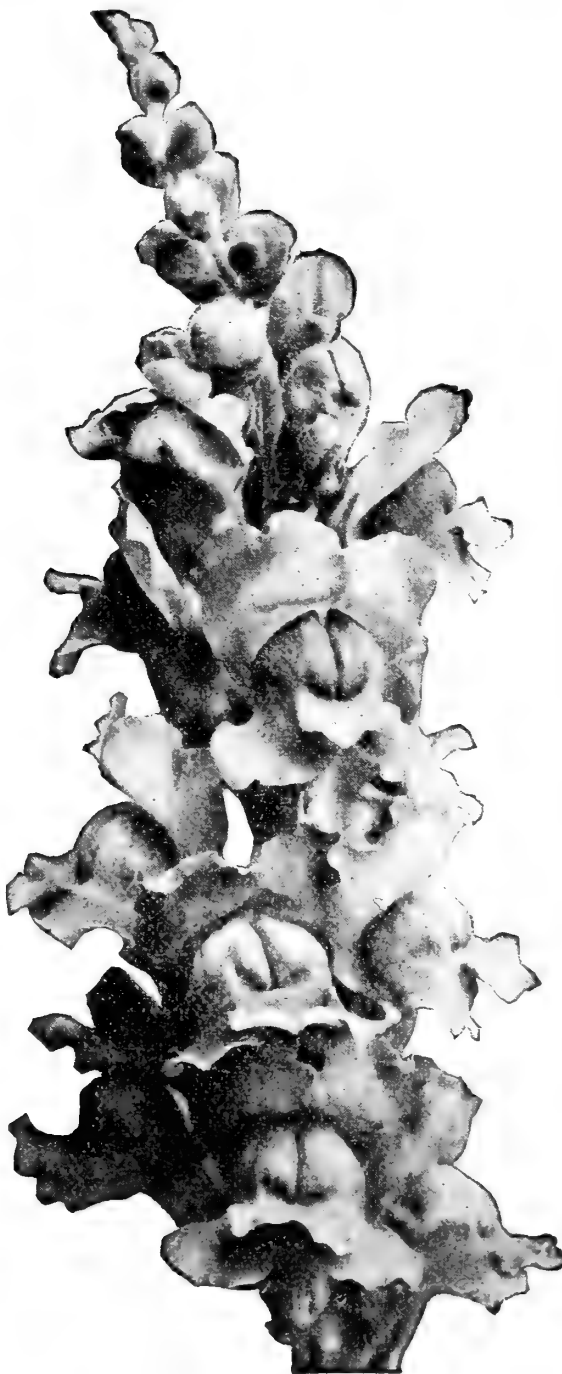
Striped.

Yellow.

Yellow Orange Striped.

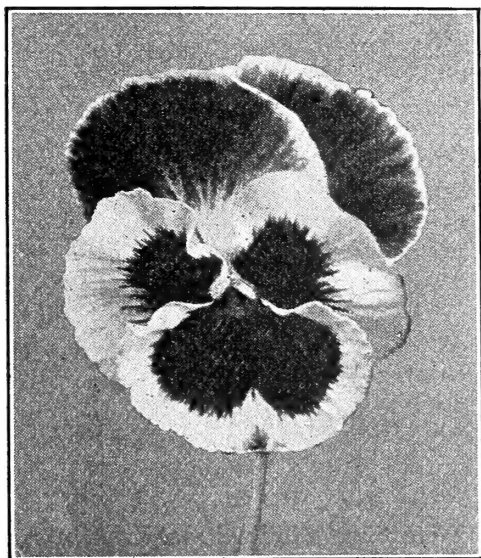
Ruby King.

Pink.



Flower Seeds (Con't.)		Per ¼ oz.	Per oz.	Per ¼ oz.	Per oz.
Alyssum—					
Benthami (Sweet Alyssum)					
1-4 lb., 50 cts.			15		
compactum erectum					
Little Gem" 1 4 lb., \$1.15			35		
compactum procumbens, "Carpet of Snow", ¼ lb., \$1.25			35		
(Perennial) saxatile compactum, "Gold Dust," splendid for edging		25	75		
Ampelopsis Veitchii.		10	30		
Anchusa Italica, Dropmore		20	60		
Asparagus (Greenhouse grown) Sprengeri 100 seeds 25 cts.; 250 seeds, 50 cts.; 1000 seeds, \$1.50.					
Plumosus nanus 100 seeds, 50 cts; 1000 seeds, \$3.50.					
Aquilegia—					
Cœrulea . . . ¼ oz. 35 cts.	60	2 00			
Long-Spurred Hybrids . . . 1-8 oz., 35 cts.	60	2 00			
Calceolaria hybrida grandiflora, large flowered, splendid strain, 1 120 oz. 60 cts.					
Calendula— Vick's Forcing, Double dark orange red. A very select strain grown especially for greenhouse culture. The immense flowers are borne on long stems, are a very useful addition to your winter stock. . . ¼ lb., \$1.25.	15	40			
Candytuft— White Rocket Lb., \$1 00		25			
Empress, large, white 1-4 lb., 90 cts.		25			
Gibraltarica (Perennial) lilac.	50	1 50			
Sempervirens " white	50	1 50			
Canterbury Bell (Campanula Medium), Single varieties mixed, 1-4 lb., \$1 00		50			
Double varieties mixed	35	1 00			
Calycanthema (Cup and Saucer), mixed	50	1 50			
Pyramidalis, white, blue and mixed.	35	1 00			
Carnation— Dwarf, Early-flowering Vienna, extra fine double mixed.	35	1 25			
Extra fine double mixed 1/16 oz., 20 cts.; 1-8 oz., 40 cts.	50	1 50			
Marguerite, mixed.	30	75			
" Giant, or Malmaison, mixed, extra large-flowered strain. 1-8 oz., 25c.	40	1 25			
Cineraria hybrida, choice mixed, Per packet 25 c.; 1 64 oz. 75 cts.					
Grandiflora mixed prize					
				strain, per packet, 50 cts.; 1-64 oz., \$1.50.	
Coreopsis					
lanceolata grandiflora.	10	25			
Cyclamen— Vick's special florist strain.					
Persicum, fine mixed (selected stock) 100 seeds 50c.; 1/8 oz., \$1.50.					
Persicum, giganteum, extra choice mixed, 100 seeds .60 1 16 oz. \$1.25; 1/8 oz. \$1.75.					
Amsterdam Giants, 100 seeds 65c. 1-16 oz. \$1.40; 1-8 oz. \$2.00.					
Daisy (Bellis perennis).					
Monstrous or Mammoth.					
White	1 25	4 00			
Rose	1 25	4 00			
Mixed	1 25	4 00			
Longfellow, flowers very large, dark rose, 1-8 oz. 40 cents	60	2 00			
Snowball, large flower, double white, extra fine quality 1-8 oz. 40 cents	60	2 00			
Choicest double, mixed, 1-8 oz. 35 cents	50	1 50			
Shasta—Seed from our own stock plants. . 1-8 oz. 35c.	60	1 80			
Delphinium— Formosum (blue) Chinese Mixed	65	2 25			
	20	50			
Dianthus Plumarius— (Pheasant's Eye) Single fine mixed Double mixed	20	60	35	1 00	
Semperflorens (Florists' Perpetual Pinks) 1-16 oz., 15c.	50	1 75			
Digitalis (Foxglove)					
Separate Colors	20	50			
Extra choice, mixed	15	40			
Geranium zonale, best mixed.	40	1 25			
Gloxinia hybrida, choice collection. Packet, 50 cents.					
Grevillea robusta	15	50			
Gypsophila paniculata					
White	15	40			
Hollyhock— Mam. Fringed Allegheny choice mixed	20	60			
Double Separate Colors	25	90			
Fine double mixed	20	75			
Jerusalem Cherry (Solanum Capsicastrum Nanum)	20	60			
Lobelia— Barnard's Perpetual, Cardinalis, brilliant scarlet, 1-32 oz., 30c.; 1/16 oz., 50c.;	50	1 75			
Mignonette— Sweet (Reseda odorata) lb., 60 cts.		15			
Allen's Defiance	15	40			
Bismarck—Imp'd Machet	20	60			
Machet, true dwarf, fine for pot culture and borders	10	35			
Golden Queen		35			
White Pearl, best white	35	1 00			

	Per ¼ oz.	Per oz.
Myosotis—(Forget-me-not)		
Alpestris, blue, rose and white each	25	90
“ Indigo blue, very fine	25	80
“ Robusta grandiflora, (Eliza Fonrobot)	40	1 00
“ Victoria, sky blue, for pots	65	2 00
“ Mixed	25	75
Palustris semperflorens, true perennial	90	3 00
Perfection, extra large	90	3 00
Pansies—Giant		
Packet 25 cts.; ¼ oz., 75 cts.		
Emperor, blue, purple eye	75	2 50
Golden Queen, pure yellow,	75	2 50
King of the Blacks	75	2 50
Lord Beaconsfield, purple-violet, shading to white	75	2 50
Madam Perret, rose-crimson	75	2 50
Premier Lloyd-George (Prince Bismarck) light brown shade	75	2 50
Marshall Foch (Prince Henry), darkest blue, large	75	2 50
Snowflake, fine pure white	75	2 50
Yellow, with dark eye	65	2 00
White, with purple eye	65	2 00
Choice Giant Flowered mx'd	65	2 00
Masterpiece, new class Giant Blotched. ⅛ oz., 50 cents		
1-8 oz., 85 cents	1 25	4 50
Vick's Giant Superb, mixed Florists' Choicest strain, 1-32 oz., 50 cts.; 1-16 oz., 85 cts.; 1-8 oz., \$1.50	2 50	\$8 00
Vick's Peerless mixed, 1-32 oz., 30 cts.; 1-16 oz., 50c.; 1-8 oz., 75 cts	1 25	4 00
Standard varieties mixed		90
Good Mixture from Trials		75



	Per ¼ oz.	Per oz.
Mastodon Pansies		
A new superb strain of Mammoth Pansies, American grown.		
Price: 1-16 oz., 65 cts.; 1-8 oz., \$1.10; 1-4 oz., \$2.10; ½ oz., \$4.00; 1 oz., \$7.50.		
Mastodon mixed. Many colors, huge size.		
Adonis, Mastodon, new, blue and lavender.		
Bronze Mastodon. Very large. Shading from burnished brass to gold.		
Parisian Yellow. A large pure yellow.		
White Mastodon (Dark center).		
Poppy, Iceland, Orange, White, Yellow, and Mixed,		
each	35	1 00
Poppy Oriental—		
Darkest red	20	75
Primula Sinensis —		
Choicest fringed, mixed,		
1-64 oz., 75c.; 1-32 oz., \$1.25		
Primula—		
Obconica grandiflora, hybrids mixed, 1-64 oz. 50 cts.		
Vulgaris (English Primrose) (Sold out.)		
Rudbeckia—Purpurea (Cone Flower).		
	25	1 00
Smilax (Myrsiphyllum asparagoides)		
	15	30
Stock—Dwarf Forcing, Ten-Weeks “Snow - Flake”		
	60	2 00
Dresden Perpetual White, “Cut and come again”		
	60	2 00
Large-Flowering Dwarf, Ten-Weeks, mixed colors		
	1-8 oz., 35c.	50 1 75
Giant White Nice, ⅛ oz. 40c.	75	2 50
Giant Yellow Nice, ⅛ oz. 40c.	75	2 50
Beauty of Nice, delicate fleshy pink, ⅛ oz. 50 cts.		
	75	2 50
Queen Alexandra, rosy lilac, 1-8 oz., 40 cts.		
	75	2 50
Sweet Peas—Winter Flowering see inside of front cover.		
Sweet William—		
Holborn Glory, extra large flowers, finest shades		
	15	50
Dunnett's Dark Crimson	15	50
Double White	50	1 50
Single White	10	40
Double, finest mixed	15	60
Single, finest mixed	10	30
Pink Beauty	35	1 00
Scarlet Beauty	35	1 00
Wallflower — Finest double, mixed, 1-16 oz. 25 cts.		
	85	3 00
Single, finest mixed	10	25

FERTILIZERS, INSECTICIDES AND FLORISTS' SUPPLIES

PRICES QUOTED HERE ARE NET CASH, AND SUBJECT TO MARKET CHANGES

Pulverized Sheep Manure. Natural and offensive. A pure animal fertilizer, dried and pulverized. Contains no acids or chemicals to burn the seeds or plant roots. Special Price for Fall Sales. 100 pounds for \$2.50; 500 pounds for \$10.00; 1000 pounds for \$19.00; One ton for \$37.50. Net cash.

Pulverized Poultry Manure. Is superior to all other pulverized manure in the availability of its chemical contents, less number of pounds are required to cover a given space than of any other organic fertilizer, in passing through the dryers this fertilizer is subjected to an intense heat that kills all seeds and germs it may contain and there is no objectionable odor following application. Analysis, Nitrogen 4.10%; Total Phos. acid 2.70%; Available Phos. acid 1.70%; Potash, 1.30%. 100 lbs., \$2.75; 500 lbs., \$11.00; 1,000 lbs. \$20.00; 1 ton for \$38.00. Net cash.

Florists Bone Meal. Nothing better for mixing with potted soil for bulbs than Bone Meal. 100 pounds for \$4.25; 500 pounds, \$18.00; ton \$65.00.

Wood Ashes. High Potash Analysis. Per barrel, (about 200 lbs.) \$4.00;

Black Leaf 40. A concentrated solution of Nicotine sulphate which does not evaporate like "free" nicotine, in ordinary temperatures. Therefore especially valuable for spraying in the gardens, nursery or orchard. 1 oz. bottle, 25 cts.; ½ pound can, \$1.25; 2 pound can, \$3.50; 10 pound can, \$13.50.

Fumigating Lamp, complete for use with Nikoteen Liquid, Nico-Fume Liquid or any other liquids used in fumigating Greenhouses. Each, 85 cents; two for \$1.50.

Fumigating Lamp, Glass, uses alcohol fuel, complete with stand, for use with any liquid insecticide. Each, 85 cents.

Nico-Fume Papers. Tobacco paper in sealed tin cans. Most effective and best method of fumigation. Tin cans (24 sheets) \$1.25; 1 gross can (144 sheets,) \$5.00; 2 gross can (288 sheets) \$9.50.

Nico-Fume Liquid is a highly refined solution of "free" nicotine, guaranteed under the National Insecticide Act to contain 40 per cent. of nicotine. FOR SPRAYING, one or two teaspoonsful to the gallon of water furnish an effective remedy against Green Aphis or Thrips; and for VAPORIZING, one-half ounce per 2000 cubic feet furnishes a strong fumigation. "Nico-Fume" Liquid thus has the advantage of being employed both for spraying and for fumigating. The labels contain complete directions. ¼ lb., 65c; 1 lb., \$2.00; 4 lbs., \$7.50; 8 lbs. \$14.50.



Tobacco Dust (fine) For dusting. 1 lb., 10 cents; 10 lbs., 50 cents; 100 lbs. \$4.50

Tobacco Stems for Fumigating. Fresh clean stock in bales of about 50 lbs., each per bale, \$1.00;

Nebelastic. A perfect compound, superior to putty, for glazing, re-glazing and repair work. It never hardens or gets brittle—contracting and expanding with the frames of the greenhouse, resulting in a saving from broken glass. We sell it under a money-back guarantee in 35 and 55 gallon drums at \$1.50 per gallon; 5 gallon cans, \$1.70 per gallon; 1 gallon, \$1.75; Glazing Gun, —ordered with the large drums Gratis; One-handed Glazing Gun, \$5.00.

Pot Labels. Painted, per 1000 — 4 inch, \$1.55; 4½ inch, \$1.85; 5 inch, \$2.00; 6 inch, \$2.35; 10 inch, \$10.00;

Raffia. Natural 1 lb. 20 cents; 5 lbs. or over at 19 cents per lbs.



Hall's Nicotine Fumigator

A specially prepared fumigating Compound saturated with pure Nicotine. Lights quickly, burns evenly and will not go out. It cost but 25 cents to fumigate a greenhouse 20 x 100. 10 lb. tins, \$8.50; 2½ lb. tins, \$2.50; 1 lb. tin, \$1.25.



Hall's Free Nicotine

For effective greenhouse spraying or vaporizing. As a spray it cost only 2½ cents a gallon. For fumigating it has all the killing power of Hall's Fumigator. 8 lb. tins, \$15.00; 2 lb. tins, \$4.25; ½ lb. tins, \$1.40.



Hall's Tobacco Dust

Finely ground and screened, ready for use. Guaranteed to contain a full 1% Nicotine. Very effective wherever dusting is preferable to spraying. 100 lb. sacks, \$4.50; 2 lb. drums, 35 cents.



Hall's Nicotine Sulphate

For spraying fruit trees and truck crops, 40% Nicotine guaranteed. Makes a deadly spray costing only 2 cents a gallon. 10 lb. tins, \$13.50; 2 lb. tins, \$3.50; ½ lb. tins, \$1.25; 1 oz. bottles 35 cents.

Hall's Nicotine Insecticides

There are four:-

Each of the four Hall's products is a most effective and economical insecticide in its particular field --- fumigating or vaporizing, spraying or dusting.

In all of them the killing agent is Nicotine, which is the most effective contact poison known. Nicotine is very economical also. And furthermore, being a vegetable extract, Nicotine will not harm fruit, vegetables, flowers or foliage.

Hall's Nicotine Insecticides contain just the right percentage of pure Nicotine for effective and economical use. They are scientifically prepared in every detail for one purpose to destroy aphids, thrips, leaf hoppers and similar insects. You can absolutely depend on them to wipe out these pests.

JAMES VICK'S SONS

Rochester, N. Y.

"The Flower City."